

COVID-19 Drive-Thru Testing

Sophie Trettevick Indian Health Center is now offering COVID-19 testing for people over the age of 12 years old, at our drive-thru testing site located at the Community Gym. Testing will be held once-weekly on Wednesday mornings and you must schedule an appointment with the clinic to participate.

IF you live in Neah Bay and you are experiencing a symptom(s) of COVID-19:

You can sign up to be tested. Call the clinic at 360-645-2233 to schedule your appointment. If you are not a registered patient at STIHC, you will be asked to fill out a registration packet before you are scheduled.

COVID-19 symptoms include:

- fever or chills
- cough
- shortness of breath or difficulty breathing
- fatigue
- muscle or body aches
- headache
- new loss of taste or smell
- sore throat
- congestion or runny nose
- nausea or vomiting
- diarrhea

IF you are an employee who has been directed by your employer to have a COVID-19 test you are still required to call the clinic and schedule an appointment for testing at the weekly drive-thru.

If you think you MAY have been exposed to COVID-19 and do not have any symptoms yet:

Please remain at home and avoid all close contact with others. Take other proactive steps to protect the health of friends and family, such as wearing a mask, avoiding physical contact, and regularly washing your hands. Monitor for symptoms and call the clinic to schedule an appointment for a COVID-19 test if you develop any of the above symptoms.

Visit the Testing Site

- If you have an appointment for your COVID-19, you will be able to drive-through to the testing site at your scheduled time.
- The process will take about 15 minutes. Wear your face covering when visiting the site.

Get Your Results

- Results will be available in about 48-72 hours.
- Clinic staff will notify you immediately with any positive test results.

COVID-19 Test – What to Expect at the Testing Site

About the test:

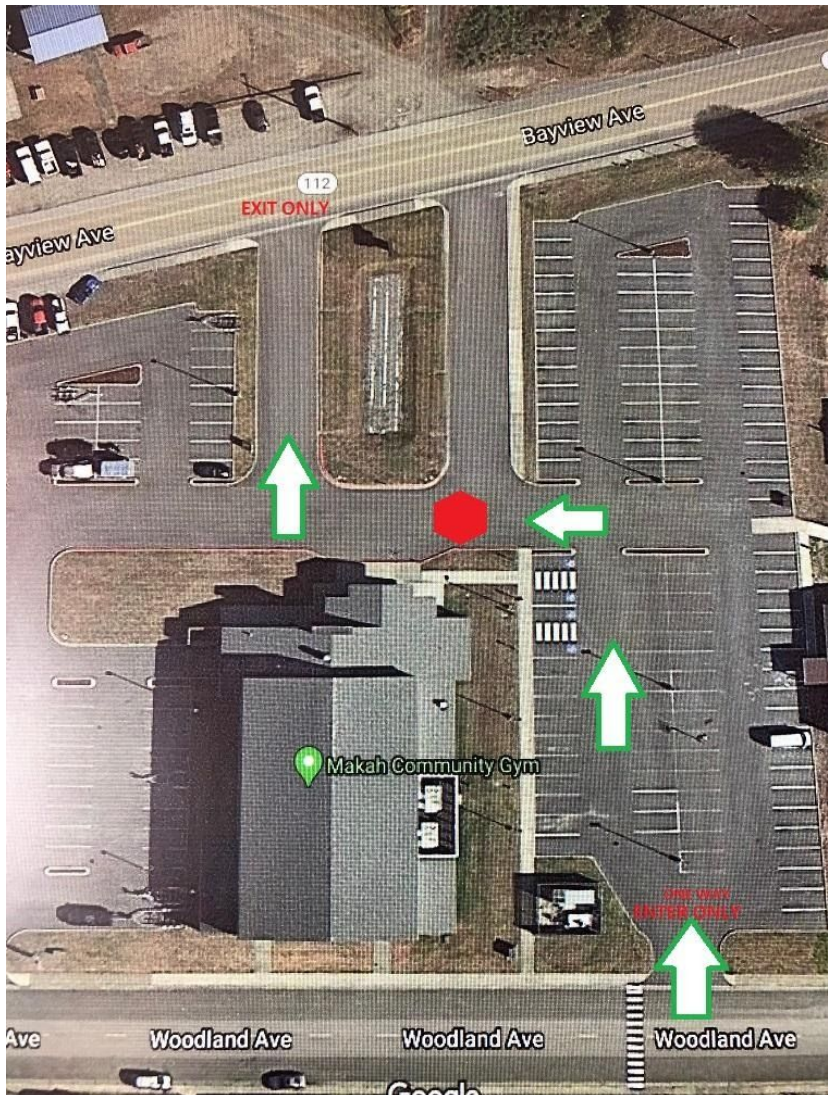
- Medical professionals will be administering a nasal swab test.
- This test detects if you currently have the virus. It does not test for immunity or antibodies.
- If your test is negative, you should still minimize contact for 14 days as it can take up to two weeks for symptoms to appear.

How to approach the Test Site Locations

- Please ENTER the test site from the Woodland Ave entrance.
- There is ONE WAY traffic flow around the building to keep everyone safe.
- You will EXIT onto Bayview Ave.

Day of Testing

- Go to your test at your scheduled time. Bring a photo ID with your date of birth
- Wear a mask.
- The process will take about 15 minutes.
- If you feel severely ill, please do not come to your test. Call the clinic to be seen by a provider immediately or call 911.



- This site is designed and intended for drive-up testing and is not ADA compliant for pedestrians. If you need an accessible walk-up testing site, don't worry, call the clinic to get a walk-up appointment.

On Arrival

- When you arrive at the site in a car, keep your windows rolled up. Follow the directions given on the signs and by traffic control staff
- When approached, open your window 2 inches to show an attendant your photo ID and verify all the information you entered during the scheduling process.
- You will then go to a second station for the nasal swab test.
- At the testing station, turn off your vehicle and roll your window down so that the test can be administered. You may be asked to verify your name and date of birth again. Then you may take off your mask for testing.

How We will Collect Your Sample

To take your sample, the medical staff will ask you to tilt your head back 70 degrees. They will insert the swab deep into one of your nostrils to collect the sample. It will be held in place and then rotated to collect the sample.

How to get Your Test Results

Results are usually ready in 48-72 hours.

We will notify you immediately with any POSITIVE results.

Due to the large volume of tests being performed, we may not be able to call you back with a NEGATIVE result immediately. If you have not heard from the clinic within 5 days of being tested, please call to inquire.

Positive or Negative: Stay home!

If you test positive:

- This means that you have COVID-19
- Avoid people who have not had a positive COVID-19 test.
- You can still spread COVID-19, even if you don't have symptoms.
- Remain in your home and isolate yourself from others.
- You will receive a phone call from the Contact Tracing Team. Monitor for developing symptoms.

If you test negative:

- You may still have COVID-19 even with a negative test. The test does not always identify people who are infected.
- If you received the COVID-19 test because you were required to do so by your employer, you should continue to wear a mask in public and at work. Monitor yourself for fevers or other COVID-19 symptoms, practice good hand washing frequently and do your best to maintain physical distancing of 6 feet..
- If you believe that you were exposed to COVID-19, stay home and monitor yourself for symptoms, even if your test was negative. For more information please refer to www.stihc.org.